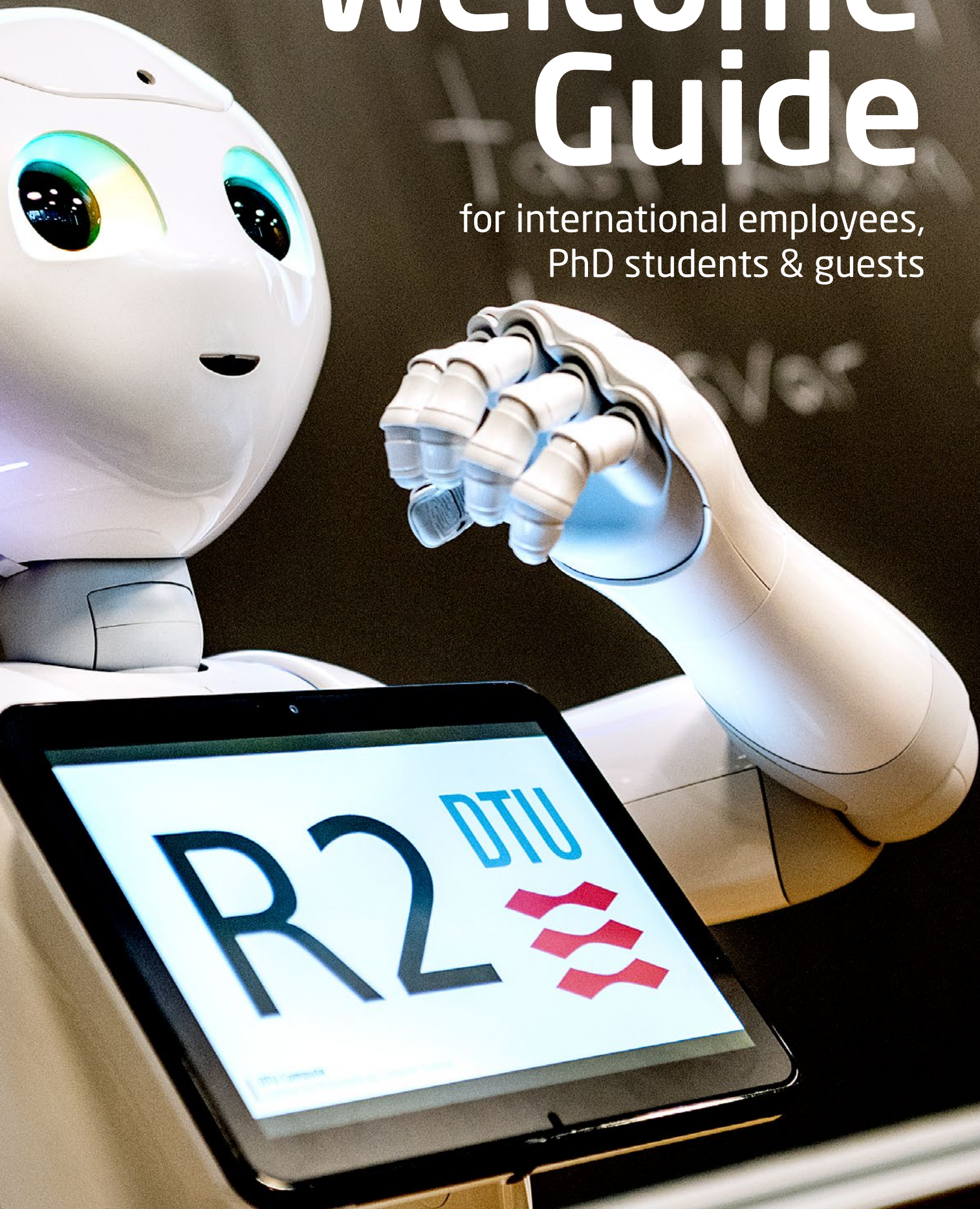




Welcome Guide

for international employees,
PhD students & guests



This Danish KZ III aircraft was in use from 1944 - 1980 and now hangs in the DTU Library, Lyngby



Table of Contents

Bank Account, NemKonto & NemID/MitID	14
Car and Drivers License	25
Checklist	5
Children in Denmark - Childcare	28
Corporate HR - DTU International Mobility	4
Cost of Living	16
Culture and Leisure	35
Danish Lessons	34
Dictionary	38
DTU Campuses, Test sites and Research Facilities	32
E-Boks	15
Education & Diploma recognition	28
Emergencies	25
Everyday Necessities	34
Guest researchers	36
Health Insurance Card	11
Holidays	20
Housing	26
Insurance	24
International House Copenhagen	9
International schools	29
Links and Further Reading	41
Pay and Working Hours	15
Payslips, DTU	17
Pension Scheme	22
Primary Education	28
Public Holidays at DTU	35
Public Transportation	30
Registration / CPR number	9
Registration in Denmark for commuters from Sweden	37
Spouses and support	33
Taxation	12
Trade Unions	25
Work and Residence Permit	7

Corporate HR DTU International Mobility

Corporate HR at DTU is in charge of every aspect of the employee life cycle in the organization

Corporate HR assists with the recruitment, relocation and retention of DTU's international researchers, PhD students, guests and their families.

Work & Residence Permits and EU Residence

The process is handled by our HR Coordinators. You will be contacted by the relevant HR Consultant and HR Coordinator early in the recruitment process. We look forward to welcoming you to Denmark. Please let us know if you have any questions.



DTU Eco-marathon racer "dynamo" i profile

Checklist

Please use the checklist below as a guide to the practical matters that you will need to take care of when moving to Denmark. You will find detailed information about each of the points on the following pages

Before Arrival

- Non-EU citizens: In cooperation with your HR Coordinator you apply for your work and residence permit (at least 2½ months in advance)
- Find accommodation in Denmark
- Investigate daycare and schools

Upon Arrival

- EU citizens: Apply for your EU residence document
- Register for your CPR number and health insurance card
- Apply for a tax card (ordinary tax scheme)
If you wish to apply for the researcher tax scheme, please inform Corporate HR. We will apply on your behalf.
- Order NemId/MitID at International House Copenhagen or your local citizen service
- Open a bank account and designate it as your NemKonto
- Set up your e-Boks account

During Your Employment at DTU

Always remember to contact Corporate HR in the following cases:

- Extension of contract
- Changes to your contract (part-time, leave of absence, etc.)
- Leaving Denmark for an extended period of time
- Pregnancy and childbirth

Leaving Denmark

- Please see "life in Denmark"
[<https://lifeindenmark.borger.dk/housing-and-moving/Practical-matters-before-leaving>]

DTU Lyngby Campus
- lunch in Grønnegården
(the green garden).



Work and Residence Permit

There are different rules regarding work and residents permits in Denmark.
Corporate HR will help you with the details

Overview

The rules for residing and working in Denmark depend on your country of origin and the purpose and length of your stay in Denmark. The Danish Agency for International Recruitment and Integration (SIRI) will make decisions on a case-by-case basis.

Please keep track of the expiry date of your permit and always inform HR in case of changes to your employment or if you take up residence in another country.

Citizens of the Nordic countries

Citizens of the Nordic countries, i.e. Sweden, Norway, Finland and Iceland, do not require a residence or work permit.

EU/EEA and Swiss citizens

EU/EEA¹ and Swiss citizens are free to stay in Denmark for up to 3 months without registering for a residence document.

If your stay in Denmark exceeds 3 months, you will need to obtain an EU/EEA residence document [opholdsbevis], which is issued by The Danish Agency for International Recruitment and Intergration [SIRI]. The HR Coordinator connected to your department will start the application process, and you will receive further instructions on how to complete the application.

Need more information?

Please contact SIRI at:

+45 72 14 20 04

or visit

www.newtodenmark.dk

Citizens from outside the EU

Non-EU citizens must apply for a residence and work permit before coming to Denmark. Normally, a processing fee will need to be paid.

Your HR Coordinator will start the application process and send you further instructions on how to complete the application. Please let us know if you have accompanying family members so that their applications can be submitted at the same time.

We strongly advise you to apply early, since it takes a minimum of 8 weeks to obtain the permit. NB. You cannot start working before the permit is issued. Read more about The Danish Agency for International Recruitment and Integration (SIRI)'s [service goals](#).

It is important to fill out the application forms correctly and attach all required documents. There is a checklist in the application form. Please review this list carefully.

Exceptions to the need for a work permit

In certain cases, non-EU citizens can perform certain types of work-related activities while in Denmark on a visa, without holding a work and residence permit. Such activities include teaching, attending a course or participating in meetings, negotiations, briefings and training.

It is very important to determine whether you need a work and residence permit or a visa before you arrive in Denmark. Please contact the HR Consultant at your department with any questions you may have regarding work. You can also find more information at newtodenmark.dk.

Lapsed residence permit

If you leave Denmark for an extended period of time, or if you no longer maintain a residence in Denmark, your residence permit may lapse. This means that you can lose the right to reside in Denmark and that you may be denied re-entry when you return.

¹ EU citizens are citizens from Austria, Belgium, Bulgaria, Croatia, Cyprus (applies to the Greek-Cypriot area only), the Czech Republic, Denmark, Estonia, Finland, France, Germany, Greece, Holland, Hungary, Ireland, Italy, Latvia, Lithuania, Luxembourg, Malta, Poland, Portugal, Romania Slovakia, Slovenia, Spain and Sweden. EEA-citizens are citizens from Liechtenstein, Norway and Iceland. Citizens of Switzerland fall under the same rules as EU/EEA citizens.

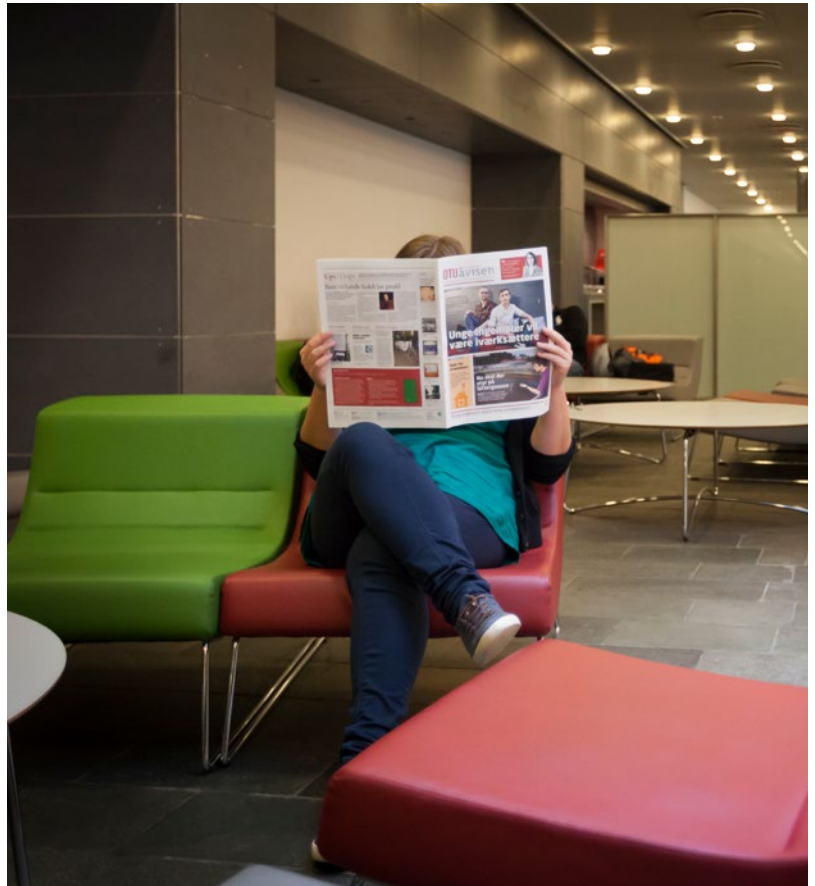
Your residence permit can lapse if you:

- give up your residence or are no longer registered at a Danish address with the national registration office (see [page 9](#))
- fail to enter Denmark within 6 months of the granting of a residence permit
- stay outside Denmark for more than 6 months
- no longer fulfill the requirements of your work and residence permit (e.g., if you take unpaid leave or start working part-time)

Some types of work and residence permits are exempt from these rules and will not lapse. Please make sure to read your permit carefully.

[Please review the complete rules regarding a lapsed residence permit here.](#)

You can apply for a dispensation to prevent your residence permit from lapsing. If you require a dispensation or have further questions, please contact the HR Coordinator at your department.



DTU campus offers many public areas where you can relax and recharge.



DTU Lyngby
- International
Afternoon 2014

Registration (CPR number)

How to apply for a CPR number depends on your situation. There are different application procedures

If you intend to stay in Denmark for more than 3 months, you must register with the national registration office [[folkeregister](#)] and receive a CPR number (social security number).

After registering, you will also receive your health insurance certificate [[Sundhedskort / "Yellow card"](#)].

Please note that:

- EU/EEA citizens except from the Nordic countries must have a valid EU residence document and non-EU citizens must have a valid work and residence permit ([see page 7](#)) in order to register.
- You must have a lease contract for housing for at least 3 months.
- You can fill in your application for a Danish CPR number no earlier than 1 month before the date you move into your Danish home.
- [Please apply online for your CPR number here.](#)

- If your spouse / children are accompanying you, please make a joint application.

When you have sent in your application and it has been processed, you will be contacted within two weeks by e-mail asking you to visit the International Citizen Service (located at the International House Copenhagen). Please bring all relevant documents.

To receive your CPR number at International House Copenhagen, you must be a resident in one of municipalities [listed here](#). If you live in a different municipality, please visit your local Citizen Service office ([see page 10](#)).

After an ID check and final approval, you will receive your CPR number. Please make sure to inform your department secretary and Corporate HR of your CPR number.

[Local Citizen Offices](#)

International House Copenhagen

International House Copenhagen is a service center geared toward all international citizens living in the greater Copenhagen area. At the International House, you can receive help with:

- your CPR number and tax card
- your health insurance card and choosing a general practitioner
- EU registration document (limited opening hours)
- job searches for accompanying spouses and students
- exchanging your driver's licence
- MitID (in some cases, please see page 14)

**INTERNATIONAL
HOUSE
COPEN-
HAGEN**

Nyropsgade 1
1602 København V
+45 33 66 66 06

Municipal Offices

Kongens Lyngby

Borgerservice

Toftøbæksvej 12, Ground floor

2800 Kgs. Lyngby

+45 45 97 30 00

borgerservice@ltk.dk

Frederiksberg

Frederiksberg City Hall

Smallegade 1, 1st floor

2000 Frederiksberg

+45 38 21 21 21

borgerservice@frederiksberg.dk

Roskilde

Borgerservice

Roskilde City Hall

Rådhusbuen 1

4000 Roskilde

+45 46 31 30 00

borgerservice@roskilde.dk

Aarhus

Aarhus Kommune Borgerservice

Dokk 1

Hack Kampmanns Plads 2

8000 Aarhus C

+45 89 40 22 22

International Citizen Service in Aarhus

Meet Citizens' Services Aarhus, Danish Tax Authorities and The Danish Agency for International Recruitment and Integration (SIRI) at the [International Citizen Service](#) office, located at DOKK1 in Aarhus.

The International Citizen Service is for all international employees and their families in the Aarhus area, and it is a central point of access to relevant authorities in Denmark.

International Citizen Service offers in-person assistance with applications for:

- EU residence document
- CPR number and Health Insurance Card
- Tax card and introduction to the tax system

Aarhus International Citizen Service is located at:

DOKK1

Hack Kampmanns Plads 2

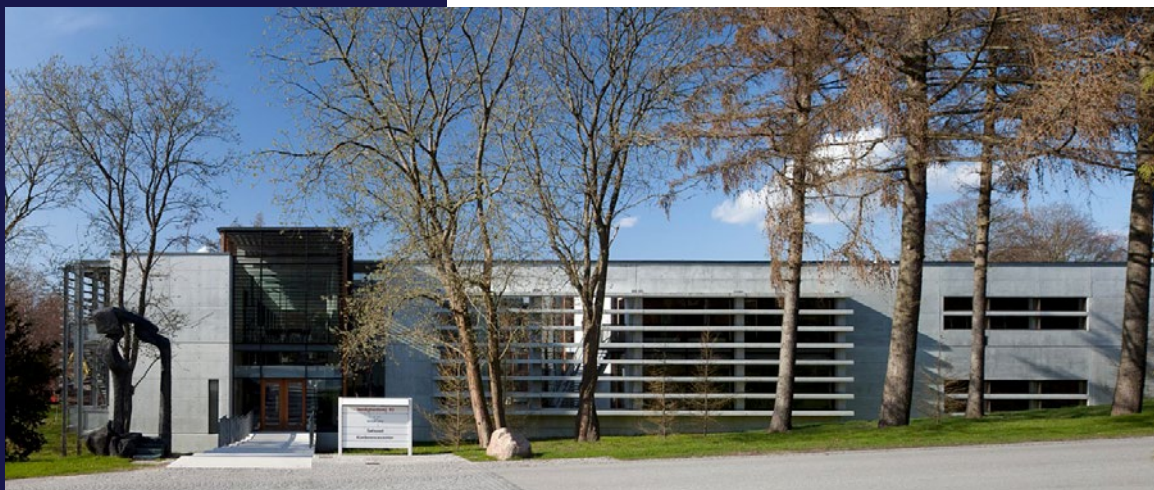
8000 Aarhus C

+45 72 22 33 75

Email: icswest@aarhus.dk

Phone: +45 89 40 10 40

[Read more about International Citizen Service in Aarhus here.](#)



DTU HØRSBOLM
Søhuset Conference Center

Health Insurance Card

Everyone who has a valid CPR number and an address in Denmark, can obtain free medical treatment at the doctor's office and at hospitals

When you register for your CPR number (see page 9), you will be asked to provide information about your health insurance country to Udbetaling Danmark which is an authority responsible for public benefits like health care, and state-funded old-age pension. This information is used to determine which country will pay for your care when you use the Danish public health insurance system.

You will also be asked to choose a primary general practitioner. If availability allows, you are free to choose a male or a female doctor.

Once you have received your CPR number, you will be covered by the Danish public health insurance system. A national health insurance card will be sent to you in the mail. This is a yellow plastic card with your name, address, CPR number and the name of your general practitioner.

The time it takes to receive a national health insurance card varies considerably from one municipality to the other, and it may take up to 6 weeks.

If you have any problems receiving your health insurance card, you should contact your municipality. Always remember to bring the card with you to doctor's and dentist's appointments, the emergency room, or if you are admitted to the hospital. Please note that in Denmark, medicine and dental treatment are subsidized but not free.

Blue European Health Insurance Card

EU/EEA citizens are entitled to a blue European Health Insurance Card, which must be used if you need medical treatment when traveling within the EU/EEA for private purposes. With the blue card, you will be entitled to receive the same public medical treatment as citizens in the country in which you are traveling. You must [request your card online](#).

Please note that it is still necessary to purchase a private travel insurance plan if you wish to have insurance coverage for the costs of home transportation due to illness.

Citizens from outside the EU/EEA normally do not qualify for the blue European Health Insurance Card and must therefore purchase a private insurance plan when traveling outside of Denmark. In some cases, a non-EU citizen who is married to an EU citizen can obtain a blue European Health Insurance Card. For more information, please contact your local HR Consultant.

Stay in Denmark for less than 3 months

You may, for example, choose to purchase a Schengen insurance plan, (No link) which covers travelers staying in the Schengen countries (Austria, Belgium, Czech Republic, Denmark, Estonia, Finland, France, Germany, Greece, Hungary, Iceland, Italy, Latvia, Liechtenstein, Lithuania, Luxembourg, Malta, Netherlands, Norway, Poland, Portugal, Slovak Republic, Slovenia, Spain, Sweden and Switzerland), Greenland or the Faroe Islands for a period of 1 day to 12 months.



Denmark is one of the happiest countries in the world

Tax

Please review this detailed guide regarding taxes in Denmark, published by the Danish Tax Authority (Skattestyrelsen)

Researcher Tax Scheme

In Denmark, there are favorable rules for the taxation of researchers and scientists from abroad. Under the Researcher Tax Scheme, scientists recruited abroad are eligible to pay a lower tax rate for their first 7 years in Denmark, provided they meet the required qualifications.

The Researcher Tax Scheme is a flat-rate income tax of 27%. This tax rate is applied after a mandatory labour market contribution of 8%, making the effective tax rate 32,84%.

To be eligible for the Researcher Tax Scheme, you must be employed in a research position at the post-doc level or higher, and you must not have had any tax liability to Denmark within the last 10 years.

If you are interested in applying, please contact your HR Consultant in Corporate HR, who will apply for the Researcher Tax Scheme on your behalf. You must have received a Danish CPR number before DTU can submit an application.

What is a Tax Card?

A tax card informs your employer of your tax liability and your tax allowance [skattemæssigt fradrag]. This is calculated based on your expected yearly income and relevant deductions. There are 3 different types of tax cards, and they are all handled electronically:

Frikort (Free tax card)

Each year, you are entitled to earn a certain portion of income that is tax-free. The amount varies from person to person, as it depends on which county you live in. Your frikort is automatically sent to your employer, and once you have earned more than the allowed tax-free amount, your employer will switch over to either your primary or secondary tax card.

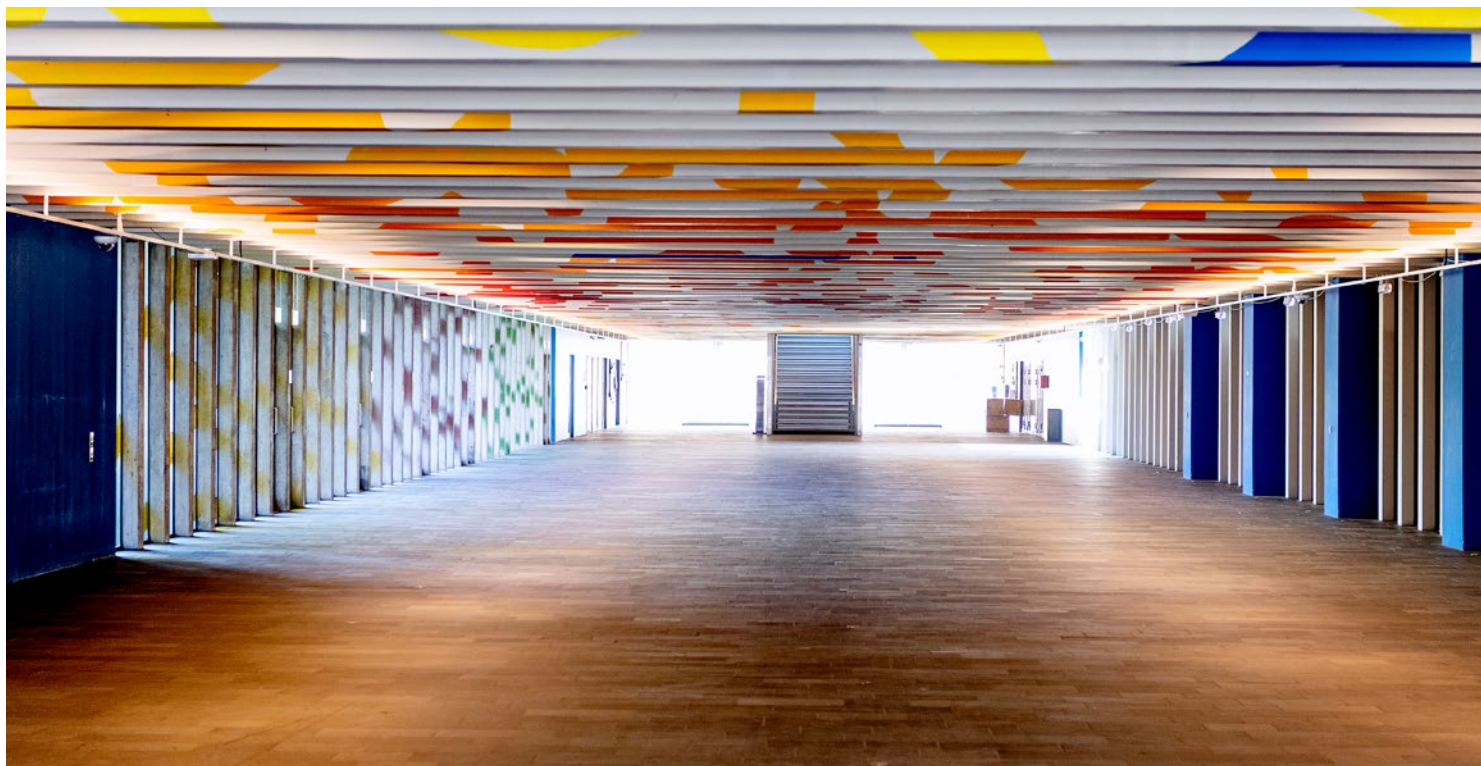
Hovedkort (Primary tax card)

Your primary tax card may only be used by one employer. This is normally your primary place of employment (where you earn the majority of your income).

Bikort (Secondary tax card)

If you have more than one job, you will use your secondary tax card for all other employers besides your primary employer. This card may be used by multiple employers.

If you do not have a tax card, DTU is required to withhold 55 % of your salary (+ 8 % labour market contributions) for taxes without allowances.



The "Runway" at the main building 101.

Please note that DTU can only apply for the researcher tax scheme if you are employed for more than 14 days. See more here.

Tax card under the Researcher Tax Scheme

If a researcher only receives income from DTU and if this income is covered by the Researcher Tax Scheme, no additional tax deduction card needs to be issued. The researcher tax will be withheld from your monthly salary once DTU receives approval from Skattestyrelsen. However, if you have additional Danish income, e.g. fees from lectures, additional employment, etc., you will be taxed on this income under the normal rules and a [tax card](#) must be issued.

After 7 years of employment, you will no longer be covered by the researcher tax scheme. You will need to contact the tax authorities to obtain a new tax card.

Ordinary taxation

Employees who have not yet attained a research level corresponding to a postdoc level or higher (i.e., all PhD students and research assistants) must [fill out and submit this form to obtain a tax card](#). If you are married, please submit a copy and official translation of your marriage certificate. Please also make sure to submit all required documents as stated on the website.

You can also receive help with your application at the International House Copenhagen (see [page 9](#)) or you can call the Danish tax authority at 72 22 28 92.

Contacting the Tax Office

Please contact the Danish tax authorities via e-mail or phone using the contact details on their webpage.

Bank Account, NemKonto & NemID/MitID

Denmark is internationally recognized as a leader in digital transformation and infrastructure

In order to receive your monthly salary from DTU, you will need to open a Danish bank account and designate it as your **NemKonto**. Everybody in Denmark must have a NemKonto in order to receive payments from the public sector (tax refunds, child subsidies, pension savings, etc.).

We ask that you designate your NemKonto as soon as possible. Please remember to bring the following documentation with you to open a bank account:

- Danish address
- Health insurance card
- NemID code card (please see section below)
- Passport (EU citizens can present an EU driver's licence)
- Employment contract
- Documentation of your personal finances

Please take into consideration that opening a bank account can be a lengthy procedure and can take up a long time.

Banks in Denmark (non-extensive list)

[Arbejdernes Landsbank](#) - Lyngby, Roskilde
[Danske Bank](#) - Lyngby, Roskilde
[Jyske Bank](#) - Lyngby, Roskilde
[Lån & Spar Bank](#) - Lyngby, Roskilde
[Nordea](#) - Lyngby, Roskilde
[Nykredit Bank](#)
[Saxo Bank](#)
[Spar Nord Bank](#) - Lyngby, Roskilde
[Sydbank](#) - Lyngby

MitID

MitID is a secure login tool that is used by the public sector, banks and other businesses. It consists of a user ID and a password.

You will need a MitID in order to use online banking and many other self-service functions, such as updating your preliminary tax assessment, changing your address, signing up for childcare, etc. You can read more about MitID [here](#).

Please contact your local citizen service center or International House Copenhagen to request your MitID. For this, you will need to show up in person at the citizen service center and to bring you Danish Health Insurance card and a valid ID (e.g. passport). Please note that some municipalities require that you book an appointment in advance. You can find your local citizen service via [this web site](#).



E-boks

E-Boks is a free, secure, electronic inbox where you will receive digital post from the public sector and many private companies

E-Boks is a free, secure, electronic inbox where you will receive digital post from the public sector and many private companies.

All individuals in Denmark are required to have an e-Boks account in order to receive mail from the public sector. All communication is sent digitally, so you will not receive letters by post.

It is important to set up your E-boks account as soon as you have received your NemID/MitID.

Authorities such as Tax Authorities, SIRI and your local municipality will send important information to you in your e-Boks (tax return, notices regarding work and residence permits, childcare, etc.).

You will also receive your monthly payslips from DTU in your e-Boks.

Many private companies also use e-Boks, so you can choose to receive monthly bank statements, yearly pension reports, subscriptions, etc. digitally instead of by post.

Remember to check your e-Boks regularly. You can set up your account to receive e-mail and text alerts when you receive new post.



The Hubertus Hunt is an annual event held in Dyrehaven

Pay and Working Hours

As a state employee, your pay is regulated by collective agreements between relevant trade unions and the Danish state. The standard wage system has, however, been modified in order to accommodate for negotiations for higher pay based on individual qualifications.

Your pay is regulated annually in accordance with the collective agreement. It is also regulated locally upon negotiation with DTU.

As a state employee, your work week is 37 hours. You will receive your monthly salary in your Nem-Konto, and you will receive a digital payslip in your e-Boks.

Secondary Employment

Secondary employment is defined as

- work-related secondary jobs that are carried out as a result of DTU employment (professional secondary employment), and
- secondary jobs of a commercial nature that are carried out alongside your employment at DTU (commercial secondary employment).

DTU has a set of guidelines related to secondary employment, which all employees must follow. Please contact your manager if you already have or are considering secondary employment.

What Is the Cost of Living?

The cost of living is the amount of money needed to cover basic expenses such as housing, food, taxes, and healthcare in a certain place and time period. The cost of living is often used to compare how expensive it is to live in one city versus another. The cost of living is tied to wages. If expenses are higher in a city, such as New York, for example, salary levels must be higher so that people can afford to live in that city.

Cost of living is calculated by comparing the prices of a range of goods and services on which consumers

spend their money. Costs are broken down by category, like health care, food and housing, and weighted based on spending patterns and individual budgets.

Numbeo (<https://www.numbeo.com/cost-of-living/>) is one of the world's largest cost of living databases. Here you can check real time information about cost of living worldwide and have access to current local prices, local purchasing power comparisons, as well as research on varied relevant topics from quality of life to property markets.

Concert on campus with the Danish rockband Dúne



Understanding your payslip

An explanation of salary components, taxation and pension

Example of ordinary pension scheme - Associate Professor

1 The date your salary is deposited into your account

2 Month of payment concerned

3 Shows that your salary will be paid automatically to your "EasyAccount" (Nemkonto) via your CPR number. Remember to ask the bank to set this up when you open a bank account.

4 Net amount / salary is deposited in your NemKonto

5 Basic gross salary

6 Supplement according to position: Here you will also see negotiated qualification or special duty supplements.

7 Sum of Payment and Deductions

8 ATP: a minor mandatory labour market pension.

9 AM-bidrag: labour market contribution is a mandatory 8% tax.

10 A-skat: your income tax depends on your income tax rate.

11 Sum of Payment and Deductions

12 Income tax rate

13 Your personal tax allowance: You don't have any if you are on the researcher taxation scheme.

14 Personnel category: based on your degree, mainly for internal use.

15 Next salary increase date. If it says "ingen" you are in the final level (8).

16 On the §53A pension scheme the pension amount is taxed immediately with your salary and then paid into your pension fund.

17 Gross amount before tax

18 Technical own pension contribution

19 Pension contributions sent to the pension fund.

20 The total income gross: Current year ATP deducted

21 Your gross income: Current month ATP deducted

22 These amounts are reported to SKAT and form the basis for your tax return for the year.

23 Reported ATP. Constitutes your own contribution plus double from DTU

Nettoløn til disposition		via Nemkonto		29.242,31 kr.
		Rate	Payments	Deductions
Lønoplysninger	Antal enh	Sats	(+)Beløb	(-)Beløb
Code	Løndeletstekst			
Vedr. September 2021				
2000	Løn		32.180,08	
3811	Funktionstillæg, pensg.		1.388,79	
3821	Kvalifikationstillæg, pensg.		1.851,72	
4261	Lektortillæg		8.249,39	
7045	ATP Pension, sats A			94,67
9845	AM-bidrag			3.486,00
9850	A-skat			10.847,00
Total			43.669,98	14.427,67
Bemærk				
Skatteoplysninger				
Skattekort				
Fradrag	Træk %			
9.097	35			
Ansættelsesoplysninger				
Personalkategori	44	Ingeniører		
Lønindplacering	74	Civilingeniører m.fl.		
Trin	4			
Skalatrin	8			
Oprykningdato	Ingen			
Pensionsbidrag				
Pensionsbetaling	Procent	Samlet pens	Indbetalt pens	
17,10% pensionsbidrag		7.467,58		
Heraf 1/3 eget bidrag		2.489,17		
Sendt til P+ Pension			7.467,58	
Beløb oplyst til indkomst 2021				
	Perioden	År til dato		
A-Indkomst	43.575,31	400.734,84		
A-skat	10.847,00	100.454,00		
AM-bidrag	3.486,00	32.059,00		
ATP Pension, sats A	284,01	2.556,09		
Lønmodtager pension	2.489,17	22.345,61		
Arbejdsgiver pension	4.978,41	44.691,70		
Løn timer	160,33	1.442,97		

Example of ordinary pension scheme - Associate Professor

1 The date your salary is deposited into your account

2 Month of payment concerned

3 Shows that your salary will be paid automatically to your "EasyAccount" (Nemkonto) via your CPR number. Remember to ask the bank to set this up when you open a bank account.

4 Net amount / salary is deposited in your NemKonto

5 Basic gross salary

5 On the pension exemption scheme, the 17,10% of your salary is paid as salary instead of being paid into a pension fund. It is taxed with the salary.

6 **Gruppeliv:** a mandatory group life insurance company. It provides basic insurance in the event of critical illness or death.

7 **Supplement according to position:** Here you will also see negotiated qualification or special duty supplements.

8 **ATP:** a minor mandatory labour market pension.

9 **AM-bidrag:** labour market contribution is a mandatory 8% tax.

10 **A-skat:** your income tax depends on your income tax rate.

11 Sum of Payment and Deductions

12 **Income tax rate**

13 **Your personal tax allowance:** You don't have any if you are on the researcher taxation scheme.

14 **Personnel category:** based on your degree, mainly for internal use.

15 Next salary increase date. If it says "ingen" you are in the final level (8).

16 On the **S53A pension scheme** the pension amount is taxed immediately with your salary and then paid into your pension fund.

17 Reported ATP. Constitutes your own contribution plus double from DTU

18 These amounts are reported to SKAT and form the basis for your tax return for the year.

19 **Your gross income:** Current month ATP deducted

20 **The total income gross:** Current year ATP deducted

Nettoløn til disposition		via Nemkonto		28.725,87 kr.		
		Rate	Payments	Deductions		
Lønoplysninger	Kode	Løndelstektst	Antal enh	Sats	(+)Beløb	(-)Beløb
Vedr. September 2021						
2000	Løn				32.180,00	
2019	Tillæg vedr. pension				6.174,98	
2000	Tillæg til gruppeliv				100,35	
4205	Post Doc. tillæg				4.564,48	
7045	ATP Pension, sats A					94,67
8040	Kontingent gruppeliv					108,35
8040	AM-bidrag					3.435,00
8000	A-skat					10.664,00
Total					43.027,89	14.302,02
Bemærk						
Skatteoplysninger						
Skattekort						
Fradrag	Træk %	27				
Ansættelsesoplysninger						
Personalkategori	44	Ingeniører				
Lønindplacering	74	Civilingeniører m.fl.				
Trin	4					
Skalatrin	8					
Oprykningsdato	Ingen					
Pensionsbidrag						
Beløb oplyst til elndkomst 2021						
		Perioden	År til dato			
A-Indkomst		42.933,22	240.057,93			
A-skat		10.664,00	59.625,00			
AM-bidrag		3.435,00	19.207,00			
ATP Pension, sats A		284,01	1.609,41			
Løntimer		160,33	887,16			
Nyt						
Få mere information om lønsedlen https://bes.dk/systemer/loenudbetaling/brugervejledning/loensedle/						

Example of ordinary pension scheme - Associate Professor

Nettoløn til disposition		30/09/2021	via Nemkonto:	22.037,94 kr.	
			Rate	Payments	
			Deductions		
Lønoplysninger					
Kode	Løndelstetkst	Antal enh	Sats	(+)Beløb	(-)Beløb
Vedr. September 2021					
2000	Løn			32.180,08	
2001	Ikke-pensionsgivende tillæg			1.379,53	
6039	Statens bidrag		17,10	5.502,83	
7039	Pensionsbidrag §53 A		17,10		3.240,83
7040	ATP Pension, sats A				94,67
8040	AM-bidrag				2.677,00
8045	AM-bidrag		17,10		440,00
8050	A-skat				8.750,00
8050	A-skat		17,10		1.822,00
Total				39.062,44	17.024,50
Bemærk					
Skatteoplysninger					
Skattekort					
Fradrag	Træk %				
6.482	36				
Ansættelsesoplysninger					
Personalkategori	553	Ph.d. Stipendiater			
Lønindplacering	69	Ph.D.- stipendiater			
Trin	4				
Skalatrin	8				
Oprykningdato	Ingen				
Pensionsbidrag					
Pensionsbetaling	Procent	Samlet pens	Indbetalt pens		
17,10% pensionsbidrag		5.502,83			
Heraf 1/3 eget bidrag		1.834,25			
Sendt til P+ Pension	17,10		3.240,83		
Beløb oplyst til indkomst 2021					
	Perioden	År til dato			
A-Indkomst	38.967,77	339.447,34			
A-skat	10.572,00	91.631,00			
AM-bidrag	3.117,00	27.158,00			
ATP Pension, sats A	284,01	2.556,09			
Løntimer	160,33	1.442,97			

1 The date your salary is deposited into your account

2 Month of payment concerned

3 Shows that your salary will be paid automatically to your "EasyAccount" (Nemkonto) via your CPR number. Remember to ask the bank to set this up when you open a bank account.

4 Net amount / salary is deposited in your NemKonto

5 Basic gross salary

6 Supplement according to position: Here you will also see negotiated qualification or special duty supplements.

7 53A/International Pension (Rate:17.1%)

8 ATP: a minor mandatory labour market pension.

9 AM-bidrag: labour market contribution is a mandatory 8% tax.

10 A-skat: your income tax depends on your income tax rate.

11 Sum of Payment and Deductions

12 Income tax rate

13 Your personal tax allowance: You don't have any if you are on the researcher taxation scheme.

14 Personnel category: based on your degree, mainly for internal use.

15 Next salary increase date. If it says "ingen" you are in the final level (8).

16 On the §53A pension scheme the pension amount is taxed immediately with your salary and then paid into your pension fund.

17 Gross amount before tax

18 Technical own pension contribution

19 Pension contributions sent to the pension fund.

20 Reported ATP. Constitutes your own contribution plus double from DTU

21 These amounts are reported to SKAT and form the basis for your tax return for the year.

22 Your gross income: Current month ATP deducted

23 The total income gross: Current year ATP deducted



Holidays

As an employee in Denmark, you are entitled to five weeks of paid holiday per year. On top of that, you are entitled to five days of special (extra) holidays

The Danish Holiday Act

With the concurrent holiday Act, you can take holiday hand in hand with accruing holiday. You accrue 2.08 days of holiday each month that you can spend the following month. In total corresponding to 25 days/ five weeks of holiday a year.

The holiday year runs from 1 September to 31 August, and holiday must be taken in the holiday year, or no later than 31 December of the following year. In other words, you have 16 months to take your holiday.

It is DTU's overall position and expectation that all accrued holidays will only be transferred in exceptio-

nal cases. However, it will still be possible to transfer up to five ordinary days of holiday and up to five special days of holiday from one holiday period to the next by agreement. You are also entitled to take three consecutive weeks of holiday in the period 1 May to 30 September.

Five days of special holiday on top

As a salaried employee, you accrue 0.42 special days of holiday (særlige feriedage) with pay per month, which are taken in the period 1 May to 30 April of the following year. A total of five special days of holiday with pay are accrued per calendar year. You must take your five special days of holiday before the end of April of the following year



Credit Photo / VisitDenmark.com / VisitOdsherred

Pension Scheme

As an international staff member employed at DTU, you will have three different options regarding your choice of a pension scheme

Pension

As an employee at DTU, you are covered by a collective pension scheme, which means that between 15% and 17,1% of your gross salary is saved in a pension plan. In principle, the pension is divided between the employer (2/3) and the employee (1/3). The contribution is, however, shown as a separate and additional payment on your paystub. This means that the employee contribution is not deducted from your pay.

Depending on your degree and professional background, you will belong to one of the following pension funds:

- [P+ \(in Danish\)](#) - The Danish Pension Fund for Engineers, law, economics, political and social science
- [AkademikerPension](#) - Pension fund for those with a M.A., M.Sc. or a degree in natural sciences, social studies, medical and health sciences or architecture

If you fulfill the necessary requirements, you can choose between having your pension contributions paid into the Ordinary Pension Scheme, the International Pension Scheme (§53A) or having your pension paid out as salary.

Ordinary Pension Scheme

Under the Ordinary Pension Scheme, your pension contributions are exempt from taxation when paid into your pension fund. This means that you will not pay taxes at the time of contribution. Instead, you will pay tax when you withdraw your pension savings.

If you choose to have your pension savings paid out upon the termination of your employment and before retirement age, you will have to pay a government duty of 60%. Please note that your pension savings can only be paid out early if and when you choose to leave Denmark.

If you choose to take out your pension when you reach the age of retirement, the savings will be taxed at the appropriate rate according to your tax situation at that time. In this case, government duty of 60% will not apply.

International Pension Scheme (§53A)

Under the International Pension Scheme (§53A), your monthly contributions will be taxed as income at the time of contribution.

When you withdraw your pension savings, you will not pay any additional taxes. You can withdraw the savings at any time (before or at the age of retirement) without paying an additional government duty.

Additional Insurance Coverage - Ordinary Pension Scheme & International Pension Scheme

When paying into the Ordinary Pension Scheme or the International Pension Scheme, your pension fund will offer a variety of different insurance plans, such as life insurance, disability insurance, etc. You can find general information in the Ministry of Finance's brochure, [Employment in the Danish State Sector](#) (Chapter 4). For more detailed information, please contact your pension fund directly.

Pension Paid Out as Salary

New and existing international employees may choose to have their pension contributions paid out as salary if they fulfill the following requirements:

- are employed as scientific academic staff or as PhD fellows
- were recruited abroad (non-Danish address when first recruited)
- do not hold Danish citizenship
- are employed in a fixed-term position for a maximum period of five years, including contract renewals (six years if agreed upon by the relevant union)

Please note that with the exception of a basic group life insurance coverage, employees renounce the additional insurance coverage linked to the ordinary and the international pension scheme, and should therefore consider their need for supplementary private insurance cover.

Please find more information about having your pension paid out as salary here (requires DTU login which you can find in the Information Sheet for New Employees).

Taxation when paid out as salary

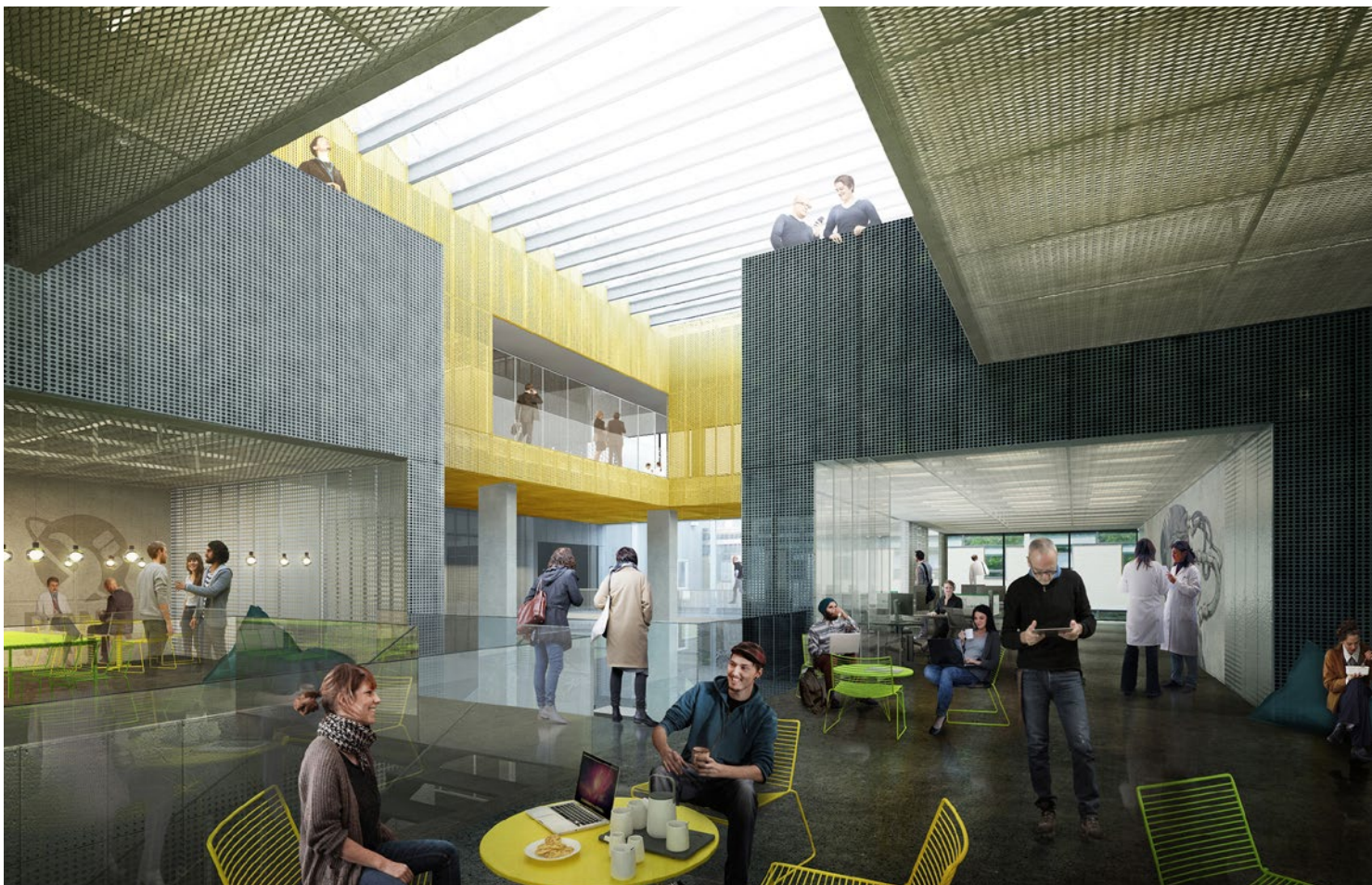
Pension contributions paid out as salary will be taxed according to the general taxation status of

employees, regardless of whether they are taxed under the Researcher Tax Scheme or are taxed in accordance with the standard Danish taxation rules.

How to apply

New employees may apply to have their pension contributions paid into the Ordinary Pension Scheme, the International Pension Scheme (§53A) or paid out as salary by ticking the relevant pension option when completing and signing the Information Sheet for New Employees. Changes can be made at any time but may not be applied retroactively. Any payments already made to a pension fund, will remain in the pension fund under that particular scheme.

DTU Lyngby Campus
- Skylab



Insurance

Most insurances are voluntary in Denmark but few types are mandatory by law

General Insurance

As an employee at DTU, you are covered by a compulsory employers' liability and accident insurance plan while at work. Guests and other non-staff members are not covered by the liability insurance.

You may also wish to consider purchasing additional insurance coverage:

- Household insurance covering content of dwellings (personal property) and liability Insurance.
- If you have a car or motor vehicle, you must have a Motor Third-Party Liability Insurance plan, which is compulsory in Denmark.
- Private accident insurance to cover accidents outside of work

You are welcome to contact the Danish Insurance Information Service, an impartial advisory body, or the Danish Insurance Association with questions. You can find information and more details about insurance [here](#).

Travel Insurance

When you travel for work outside of Denmark, you must remember to bring a valid travel insurance card issued by DTU. You can pick up the card from your department secretary.

Our vendor is [European Travel Insurance](#) and they have a 24-hour emergency line: +45 70 10 90 30. More contact details are available on their [website](#).

Please note that the insurance plan does not cover your personal computer if you bring it with you. This should be covered by a separate insurance plan - usually a private insurance plan covering personal property.

If you will combine your business travel with personal travel/vacation, you should make sure to buy a private insurance plan to cover that leg of the journey. You and your family can receive a discount on personal travel insurance from our vendor, Europæiske Rejseforsikring. Please see DTU Inside for more details (requires DTU login which you can find in the Information Sheet for New Employees).

Unemployment Insurance

In Denmark, many employees choose to insure themselves against unemployment. You can do this by joining one of the government approved unemployment insurance funds [[arbejdsløshedskasse](#) or [A-kasse](#)]. Typically, you will pay your premium in quarterly installments.

There are many different [unemployment insurance funds](#), and the majority are tailored to workers with specific professional backgrounds (e.g., academics, doctors, lawyers, etc.). In addition to providing unemployment benefits, each A-kasse is also responsible for helping their members find relevant work through individual career counseling and workshops.

Please note that in order to qualify for unemployment benefits, you must be a paying member of an A-kasse for a minimum of 12 months and have worked full-time during this period.

In addition, you may only receive benefits if you have the right to work and reside legally in Denmark while unemployed. Depending on the type of residence permit you have been issued, this may not be the case.

Before you join an A-kasse, we strongly recommend requesting a written answer confirming that your work and residence permit will allow you to receive unemployment benefits.

Trade Unions

You have the right to join a relevant trade union [fagforening] in Denmark. Your employment at DTU is covered by a collective agreement that is negotiated between the relevant trade union and the state, regardless of whether or not you choose to be a paying member of a union.

If you choose to join a union, you will have access to membership benefits such as career counseling, access to network events, discounts on insurance, banking, cultural events, etc.

You can find more information and a list of trade unions [here](#).

Car and Driver's Licence

Import of a Motor Vehicle

If you bring your car to Denmark, please read the information on The Danish Tax Authority's (Skattestyrelsen) website regarding bringing a vehicle with foreign license plates to Denmark. There you will find information regarding duty, VAT and registration tax for the import of a used car from abroad.

Please note that it is quite expensive to bring your car to Denmark because of the required duty on motor vehicles. Usually, the duty for a used car is about 60% of the value of the car in Denmark, and since cars are expensive here, the duty will often be quite high. Duties for new cars are even higher.

Driver's Licence

EU/EEA nationals can use their driver's licence in Denmark, while other nationals must convert their driver's licence if they establish long-term residence in Denmark. Please read more [here](#).

If you plan on driving in Denmark, please make yourself familiar with [Danish traffic laws](#).

Emergencies

112

In case of emergency, call 112. State your name, phone number, address, city, postal code and the reason for your call. When calling an emergency number from a mobile phone, no passcode is required.

1813 and 1818

If you require medical assistance for an injury or sickness that is not life-threatening and your doctor's office is closed, call 1813 in the Copenhagen area, 1818 in the overall Sjælland area. You will receive Emergencies assistance from a specially trained medical professional, who will determine whether you should go to the nearest hospital.

114 (non-emergency police assistance)

Call 114 if you require non-emergency police assistance. Please find more information about your local police station, driver's licences, laws, etc. [online](#), where you also can report theft, but not attacks or other offences that demand immediate intervention. (in those cases, call emergency number 112)

Housing

Finding housing can be an effort. Most foreign nationals working in Denmark choose to rent a home

In Denmark university buildings are not usually located together on a campus. Therefore, housing for students and university staff is not necessarily located on or close to campus like one might expect.

However, DTU does have three campuses (Lyngby, Risø and Ballerup), and there are a limited number of accommodations located near DTU's Lyngby campus for internationals coming to Denmark.

In some cases you may be able to start out in a DTU guest room or apartment. The minimum stay in a guest accommodation is 3 month (different rules apply to the apartments and studios in Linde Alle).

It is necessary to reserve a DTU guest accommodation well in advance, since the number of available guest accommodation is limited.

DTU cooperates with a private housing foundation ([Boligfonden DTU](#)) which provides services related to accommodations for international employees, PhD students and guests who will be at DTU and in Denmark for at least 3 months.

You may contact Boligfonden for:

- [Assistance with DTU guest accommodations for new internationals](#)
- [Information regarding searching for accommodations for long term stays for DTU affiliates](#)
- Questions regarding housing in Denmark after being accepted to DTU

As soon as you know you are coming to DTU, you should contact the housing foundation ([Boligfonden DTU](#)) and ask for an intro e-mail. This will help you get started with your search

It is very likely that you will need to find an external accommodation. Since Lyngby and Copenhagen are very popular areas to live in, it might be challenging to find a place to live, but if you are proactive, flexible and determined, you will usually find a home before your arrival.

Because there is a limited number of rental accommodations within the target price range and size most people want, it is necessary to act quickly and communicate clearly with potential landlord via e-mail prior to your arrival in Denmark.

Quality of life in Denmark is high, which means that the cost of living is relatively expensive. It will often be necessary to be flexible with your housing budget in order to find an appropriate accommodation.

When looking for housing, please keep in mind that you will need to present proof of your address in Denmark - valid for at least 3 months - in order to receive your CPR number (see page 9).

Finding Accommodation

It is your responsibility to find an accommodation when you come to Denmark. To start, you will need to search for an external accommodation through housing websites and networking. The options for finding external accommodations are:

1. Search online rental sites.
2. Hire an external relocation consultant for specialized service.

1. Links to Rental Sites

Below are some useful links to begin your search. Some of them may require a membership fee.

www.boligportal.dk
www.lejebolig.dk

Even though there is little fraud in Denmark, please bear in mind that some sites are more secure than others. It is a good idea to be cautious when speaking with landlords through Facebook or other platforms. If it seems too good to be true, it will often be attempted fraud.

You will need to introduce yourself to landlords via e-mail. If a landlord answers, then you may enter a dialogue and get answers to your questions or see

pictures. [Google Maps](#) and [Google Earth](#) are useful for seeing the surrounding area and checking the distance to your work place.

To check commutes with public transportation, you can use the web page [Rejseplanen](#). Public transportation in Denmark is effective and reliable, and it is normal to commute at least 30-45 minutes to work each day.

Denmark is relatively a very safe country. It is generally not necessary to be overly concerned

with personal safety and crime when looking for an accommodation, but usual precautions are sensible.

2. Relocation Services

You may choose to hire a third-party relocation specialist to save time and effort. Many internationals find this is a good solution for their accommodation searches.

Lyngby Station



Childcare in Denmark

In Denmark, there are good childcare facilities for children aged 6 months to 6 years, and it is common to send children to a nursery or daycare from a young age. Day nurseries (age 6 months to 3 years) and kindergartens (age 3 to 6 years), however, are subsidized by the government but not free. Please ask your municipality about prices and waiting lists. You can read more about [childcare options here](#).

Daycare

If you need daycare service for your child (age 1-6 years), please contact your [municipality](#) (only in Danish).

Børnehuset Drivhuset

DTU has an integrated nursery and kindergarten located at our Lyngby campus. You can read more about [Børnehuset Drivhuset here](#). You will still need to go through the municipality if you wish to [apply for a spot for your child](#).

Family benefits

When you have children in Denmark, you may qualify for various benefits for your children. You can [read more here](#).

Primary Education

In Denmark, education is mandatory between the ages of 6 and 15. Once a child is 6 years old, he or she can attend a public Danish primary school. Your child will be given Danish lessons for as long as necessary. Education at Public schools in Denmark is free.

Private schools in Denmark charge a tuition fee.

You can read more about [primary and secondary education in Denmark here](#). For an overview of the entire Danish education system (including adult education), please visit [The Ministry of Education's website](#).

Education & Diploma recognition

For spouses who wish to start or continue higher education, [The Ministry of Science, Innovation and Higher Education](#) can assess your foreign education and provides you with a declaration comparing your degrees and qualifications with their Danish equi- valent.

For more information and access to the relevant application forms, please visit the Ministry's Guide to Diploma Recognition.

Diploma recognition

You can have your diploma, degree or certificate assessed and recognized in various ways. The Danish Agency for Science and Higher Education provides assessments of foreign qualifications. [See more here](#).

International schools

International schools are private schools approved by the Ministry of Children and Education for education in other languages than Danish - either for the whole school or for divisions within it

A number of international schools offer instruction in languages other than Danish. Most of these schools are located in the Copenhagen area and in other large cities.

The vast majority of international schools charge a tuition fee - varying from approximately 15.000 DKK to 80.000 DKK per year. Some schools, such as Copenhagen International School, offer limited, need-based financial assistance for parents who are employed on a temporary contract in Denmark.

Interested applicants must contact the individual school to inquire about a spot for their child. Some schools are very popular and have waiting lists. You may also wish to ask if the school can guarantee an after-school care facility for your child. We strongly recommend contacting schools as early as possible.

Libraries

There is a public library in most cities in Denmark. Your yellow health insurance card serves as your library card. Some libraries may issue special library cards that you use to check out books.

Most of the services at the public libraries are free. You can often read international newspapers in your local library's reading room, and you can also find a large number of foreign language books, journals and newspapers at [Central Copenhagen Library \[Hovedbiblioteket\]](#).

If you live in Lyngby, you can find information about local libraries at www.lyngbybib.dk.

Childcare & Education

Below you will find a list of international schools in the greater Copenhagen area. You can also find a list of [all the international schools in Denmark here](#).

- [Bernadotteskolen](#)
Hellerupvej 11, 2900 Hellerup
+45 39 62 12 15
- [Birkerød Gymnasium \(IB\)](#)
Søndervangen 56, 3460 Birkerød
+45 45 16 82 20
- [Bjørns International School](#)
Gartnerivej 5, 2100 København Ø
+45 39 29 29 37
- [Copenhagen International School](#)
Levantkaj 4-14, 2150 Nordhavn
+45 39 46 33 00
- [Europaskolen / The European school of Copenhagen](#)
Ny Carlsberg Vej 99, 1799 København
+45 36 14 01 90
- [NGG International School](#)
Christianshusvej 16, 2970 Hørsholm
+45 45 57 26 16
- [Lycée français Prins Henrik](#)
Frederiksberg Allé 22A, 1820 Frederiksberg
+45 33 55 00 64
- [Rygaards International School](#)
Bernstorffsvej 54, 2900 Hellerup
+45 39 62 10 53
- [Sankt Josef's International School](#)
Frederiksborgvej 10, 4000 Roskilde
+45 46 35 25 26

Public Transportation

Public transportation in Denmark is efficient. Trains and buses cover the entire country, and Copenhagen has an excellent metro, bus and S-train network

Public transportation in Denmark is efficient. Trains and buses cover the entire country, and Copenhagen has an excellent [metro](#), [bus](#) and [S-train](#) network.

Below is an overview of some of the tickets and travel cards that may be relevant for you. They are valid for buses, trains and the metro, however please note that some are only valid for specific periods and zones.

The zone system

The Greater Copenhagen region (including Sjælland) is divided into many zones. The fare depends on the number of zones you will travel through. Please [read more here](#).

Single tickets

You can purchase single tickets from station vending machines, bus drivers, on the DOT app or 7eleven kiosks located at the station. The tickets are stamped with time, date and departure zone. The minimum fare is for 2 zones.

You must always keep your ticket and/or discount card with you for the duration of your entire journey and present it to a ticket inspector on request.

We strongly advise you to check that the correct zone is stamped on your ticket, otherwise you run the risk of a fine.

Children

Two children under the age of 12 can travel free of charge when accompanied by an adult with a valid ticket. Children travelling alone have a child fare until the age of 16.

24-hour ticket

A 24-hour ticket offers you 24 hours of unlimited travel by bus, train and metro throughout all the zones of the Greater Copenhagen region. One adult can bring along two children under the age of 12 for free.

Rejsekort

[Rejsekort](#) is a personal pre-paid card that can be used to travel throughout the entire country. The price of a journey is determined by the number of zones through which you travel.

When traveling with a Rejsekort, you must check-in at the beginning of each journey and at every transfer point. You do this by holding the card up to the blue card readers located aboard buses and at train stations. When you have completed your journey, always remember to check out. [Read more here](#).

Pendlerkort (commuter pass)

If you travel through the same zones on a regular basis, a commuter pass may be your cheapest option. When purchasing a monthly pass, you will need to state which zones you wish to travel through. The pass will be valid for unlimited travel during the given period (30-180 days), but only within those zones.

Getting to DTU

Find information on [how to get to DTU here](#).

The web page [Rejseplanen](#) can also help you plan your trip using public transportation.

One of the many yellow busses around DTU Lyngby Campus



DTU Campuses, Test sites and Research Facilities

DTU, Technical University of Denmark, has research and test facilities in all parts of Denmark, including four campuses.

DTU Lyngby Campus

DTU Lyngby campus is located 15 km north of Copenhagen. The campus covers a 106-hectare site, and is landscaped with wooded areas, sports fields, inner courtyards, and gardens.

DTU Ballerup Campus

DTU Ballerup Campus is located approximately 10 km west of Copenhagen, and is home to many of our BEng students.

DTU Risø Campus

DTU Risø Campus is located 40 km west of Copenhagen and is the site of much of DTU's ground-breaking research in energy technologies.

DTU Sisimiut Campus

DTU Sisimiut Campus in Greenland is home to both research as well as BEng and MSc Eng students who follow our arctic study lines.

Test sites and research facilities

DTU has three wind turbine test sites situated at DTU Risø Campus in Roskilde, Test Centre Høvsøre in Lemvig and the Test Centre Østerild close to Thisted. DTU Wind Energy has a total 16 test stands. All of the 16 test stands are rented by some of the best wind turbine producers in the world.

In Hirtshals, DTU conducts research within aquaculture and fisheries technology. Hirtshals harbour is home port to DTU's ocean-going research vessel Dana.

The small island of Mors is home to DTU's research activities in marine life in coastal areas, particularly shelfish.

In Silkeborg you will find research activities in freshwater fisheries, ecology, and population genetics.

[See a selection of our research facilities.](#)

Locations



Campuses, research facilities and test facilities at DTU

Spouses and support

DTU would like to welcome international spouses and partners to Denmark

IDCN - network for international spouses IDCN is a project organization that is exclusively driven by spouses. DTU is a member of the network in the Greater Copenhagen Area thereby giving DTU spouses the possibility to join the network. Here spouses have the possibility to be an active member of the network and/or to participate in events and workshops. You can read more here and register here

Online courses Workindenmark offers online job search courses that we encourage spouses to join. The course consists of 4 modules and you can read more about it here.

Copenhagen Career Program provides services for accompanying spouses residing in Greater Copenhagen. Please read more here.

Expat in Denmark is an external platform for expats, where you can network and socialize with other expats through events and meetings. You can also find links to information about taxation, health-care, education, residency, culture and leisure. The network is free for all international citizens living in Denmark.

DTU Spouses

(closed group on Facebook for DTU spouses) where we share information about upcoming events for spouses including our own spouse events.



Chess at the DTU Library



Lyngby down town

Danish Lessons

The Danish Language Training Program stretches over 2½ years and 5 or 6 modules.

Danish courses are free of charge for the first 5 years in Denmark, but you will be required to pay a deposit which will be refunded

when you have finished the course. Lessons can be taken at DTU Lyngby, DTU Risø and DTU Ballerup as well as online. You can find more on the internal DTU site - Inside (requires DTU login).

Everyday Necessities

Discount chains

Coop365, Netto and Rema 1000. In the big discount chains, you will find everyday necessities such as bread, milk, butter, meat, fruit, vegetables, etc. These discount chains have less of an emphasis on service and choice, but the goods are often cheaper than in supermarkets.

Supermarkets

Bilka, Føtex, Kvickly, Meny & SuperBrugsen. The main supermarket chains have a larger assortment of goods, including food items, hardware and clothing. Their service level is typically higher than that of the discount chains.

Opening hours

Supermarkets are typically open from 8 – 21. Stores in Copenhagen may have longer opening hours.

International specialties

You can buy most international specialties in kiosks and small specialty shops in Copenhagen. In addition, a wide selection of gourmet goods can be found at [Torvehallerne](#) (Frederiksborggade 21, 1360 København K), an indoor/outdoor food market near Nørreport station.

Culture and Leisure

Danes value their spare time, and many participate actively in sports (football, swimming, running, aerobics, badminton, handball, golf etc.), cultural activities or are members of volunteer clubs and associations

There are also special programs for children in all municipalities. Joining a local sports team or club is a great way to meet new people, pursue an existing hobby and learn about Danish culture.

The following links provide information on how and where you can participate in various activities:

[The Danish Ministry of Culture](#)

[DGI: Gym Associations](#)

[DIF: Sports Clubs](#)

[Adult Education \[folkehøjskole\]](#)

DTU Sport

At DTU in Lyngby and Roskilde, there are several

sports clubs open to both students and employees. At DTU in Lyngby, there is a fitness center and climbing wall that students and employees can join. You can also sign up for a variety of classes, such as yoga, bodybike, gymnastics and badminton. [More information is available on DTU Inside \(requires login\).](#)

There is also a swimming pool located near DTU in Lyngby. Please [visit their site](#) (in Danish only) to find opening hours and address.

At DTU Risø, there is also a fitness center open to employees. If you wish to become a member, please sign up via DTU Sport's [website](#).



DTU employees and students at a DTU running-event.

Public Holidays in Denmark

New Year's Day [[nytårsdag](#)] - 1 January

Maundy Thursday [[skærtorsdag](#)]

Good Friday [[langfredag](#)]

Easter Sunday [[påskedag](#)]

Easter Monday [[2. påskedag](#)]

Ascension Day [[Kr. Himmelfartsdag](#)]

Whit Sunday [[Pinsedag](#)]

Whit Monday [[2. Pinsedag](#)]

Constitution Day [[Grundlovsdag](#)] - 5 June

Christmas Eve [[Juleaftensdag](#)] - 24 December

Christmas Day [[1. Juledag](#)] - 25 December

Boxing Day [[2. Juledag](#)] - 26 December

New Year's Eve [[Nytårsaftensdag](#)] - 31 December

Guest researchers

DTU welcomes guest researchers. Most of the information in this Welcome Guide also applies to guests. Some, however, depends on the length of your stay.

Stay over 3 months:

Health insurance

Once you have received your social security (CPR)-number, you are covered by the [Public Danish Health Care Service](#). This also applies to your accompanying family members. However, please note that it might take some time to get your social security (CPR)-number in place. Therefore, we recommend you check with the health insurance in your home country, if you are covered during your first time in Denmark and if not, take out additional private insurance. If you are EU/EEA-citizen you can check with the health authorities in your home country, if you are covered by the blue EU-health insurance card.

Liability and accident insurance

Before travelling to Denmark, please make sure to subscribe to a *liability insurance* and an appropriate *accident insurance* that covers your full stay as a guest at DTU. We recommend doing the same for any accompanying family members.

Housing assistance

In order to receive information about our housing services and how to search for accommodation for your stay, please contact the [DTU Housing Foundation](#) at housing@adm.dtu.dk

When looking for housing, please keep in mind that you will need to present proof of your address in Denmark in order to receive your social security (CPR) number. Your lease contract must be valid for at least 3 months from the date you register for your CPR number.

Tax

You should not be tax liable to Denmark if your salary and all expenses related to your temporary stay in Denmark are supported by a foreign entity (a university or company based abroad). However, there are certain instances that might trigger Danish taxation.

It is mandatory that you contact the Danish tax authorities ([Contact - Skat.dk](#)) and clarify your specific tax liability.

Stay under 3 months:

Health insurance

If your stay in Denmark is for less than 3 months, you cannot obtain a social security number (CPR number) or a health insurance card. *We therefore encourage you to obtain private insurance coverage.* Before travelling to Denmark, please make sure to check that you have an appropriate *travel insurance* covering *health care, accident and liability insurance* during your full stay at DTU. We recommend doing the same for any accompanying family members.

Liability and accident insurance

Before travelling to Denmark, please make sure to subscribe to a liability insurance and an appropriate accident insurance that covers your full stay as a guest at DTU. We recommend doing the same for any accompanying family members.

Housing assistance

It may be possible to book a guest accommodation on DTU's Lyngby campus for a minimum of 1 month, depending on availability. Please contact your department for more guidance.

If you need to find accommodation off campus, the [DTU Housing Foundation](#) can provide you with a list of short-term rentals. Please contact them at housing@adm.dtu.dk

Tax

You should not be tax liable to Denmark if your salary and all expenses related to your temporary stay in Denmark are supported by a foreign entity (a university or company based abroad). However, there are certain instances that might trigger Danish taxation.

It is mandatory that you contact the Danish tax authorities ([Contact - Skat.dk](#)) and clarify your specific tax liability.

Registration in Denmark for commuters from Sweden

Below you can find information how to register in Denmark, if you are a commuter - meaning that you continue living in Sweden while commuting to your work at DTU each day (or several times a week)

Please note that if you are a NON-EU/EEA national, you will need a Danish work permit even if you have a Swedish residence permit.

Step 1 - Tax id number

If you plan to use the Researcher Tax Scheme (see [page 12](#)), DTU will apply for a Danish tax id number for you in connection with the application for Researcher Taxation.

If you are not planning to use the Researcher Tax Scheme, it will be your responsibility to get your Danish tax registration in place. You can do the tax registration online [via this webpage](#). Please remember to upload a copy of the documents mentioned on above web site.

You can apply for your Danish tax id as soon as you have received your employment contract - however, earliest 21 days before your first working day in Denmark. If you have questions, please contact the Danish Tax authorities.

Please send your tax id number to your HR-contact, once you have received it.

Step 2 - Special Health Insurance card

Once you have received your tax id number, you can apply for a special health insurance card, which will allow you to visit a doctor in Denmark in case you should need it. You can apply for the special health insurance card online on [this webpage](#).

Step 3 - Danish bank account

For opening a bank account in Denmark, you will need to have your Danish personal tax number in place (see step 1). We recommend starting the process of opening a bank account as soon as you have received your Danish tax id number, because DTU will need the Danish bank account for your salary payment and it may take some time to get the bank account in place as the banks are required by law to perform a number of security checks. You are free to choose any of the banks here in Denmark or a Swedish bank

with cross border services, which can open a Danish bank account for you. It is important that you inform the bank that the account needs to be a [NemKonto](#) (Designated account) as this is a requirement for the salary payment.

For opening a bank account, several documents are needed. Please contact the bank and ask which documents they need. Your Danish bank might require that you have a MitID (which is a secure online login tool) before your account can be opened.

For more information about how to get a MitID, please see section "Bank Account, NemKonto & MitID" in this Welcome Guide.

Not have a Danish address you will need to bring additional documents and a witness to get a NemID/ MitID. We recommend that you contact the [Citizen Center in Lyngby Taarbæk](#) to hear which documents you need to bring and which requirements your witness needs to fulfill.

When contacting the Citizen Center, please remember to state that you are commuter from Sweden. You can read more about [MitID](#) here.

Please send your bank account details to your [HR](#) contact at DTU, once you have received it. If you cannot get your Danish bank account in place before salary deadline (approx. the 15th in each month), you can contact HR to arrange a manual salary payment.

Other steps

We recommend you to contact Öresund Direct that can help you with advice regarding important topics like unemployment insurance, Swedish tax liability etc. For more information and booking an appointment, please visit [Oresund Direct's](#) webpage.

Dictionary

Greetings

hej/goddag	hello
hej hej/farvel	goodbye
tak	thank you
undskyld	excuse me, sorry

til højre (th.) /	to the right /
til venstre (tv.) /	to the left /
midt for (mf.) /	in the middle /
kælder (kld.)	basement
	<i>These abbreviations are used for your address.</i>

Housing

bolig	accommodation
lejlighed	apartment
andelsbolig	cooperative
ejerlejlighed	condominium (privately owned apartment)
hus	house
anneks	annex
værelse (vær., v.)	room In Denmark, the living room is included in the number of rooms in an apartment or house. A 2-room apartment will have 1 living room and 1 bedroom.
rum	room
køkken	kitchen
bad / toilet	bathroom
bruser / bruseniche	shower
soveværelse	bedroom
stue	living room
altan	balcony
kælder (kld.)	basement
loft	attic
møbleret	furnished
umøbleret	unfurnished
husdyr	pets
etage	story (e.g., <i>The building is 5 stories high.</i>)
st.	ground floor
1. sal	1st floor This is the floor directly above the ground floor, what in some countries would be the 2nd floor.

Lease terminology

lejekontrakt	lease
fremleje	sublease
lejer	tenant
udlejer	landlord
husleje / leje	rent
indflytning	move-in
fraflytning	move-out
tidsbegrænset	temporary
tidsubegrænset	permanent
kr./md.	Danish kroner per month
betalingssted	landlord's bank registration and account number
depositum	deposit
forudbetalt leje	prepaid rent In Denmark, it is legal to charge 3 months' prepaid rent + 3 months' deposit + the 1st month's rent before move-in, i.e., 7 months' rent when signing the contract. The prepaid rent is applied after you give termination notice at the end of the tenancy, which means that you only owe consumption for the last 3 months.
nyistandsat /	newly renovated /
uistandsat /	not newly renovated /
som beset	as-is This is particularly important, as it is normal to rent a newly painted apartment with newly sanded/lacquered floors. In this case, it is also normal that the

	deposit will be used to renovate at move-out. A/C forbrug consumption (on account) This is a monthly charge which has been estimated and may be reconciled once per year.		
varme	heating	bagepulver	baking powder
vand	water	bikarbonat	baking soda
elektricitet (el.)	electricity	hvedemel	white flour
licens	TV license fee for Danmarks Radio (public broadcasting service, mandatory)	fuldkornshvedemel	whole wheat flour
		majs	maize, corn
		ris	rice
		olie	oil
		eddike	vinegar
		kaffe	coffee
		the	tea
		vin	wine
		øl	beer
		stanniol /sølvpapir	aluminum foil
		plastfolie	plastic wrap
		sæbe	soap
		vaskemiddel	laundry detergent
		opvaskemiddel	dishwasher detergent
		afspændingsmiddel	dishwasher rinse aid
Food & Household			
brød	bread		
kød	meat		
oksekød	beef		
svinekød	pork		
kylling	chicken		
fisk	fish		
grøntsag	vegetable		
frugt	fruit		
mælk	milk		
sødmælk	whole milk		
letmælk	low-fat milk (1,5%)		
minimælk	low-fat milk (0,5%)		
skummetmælk	non-fat milk (0,1%)		
kærnemælk	buttermilk		
laktosefri	lactose-free		
ost	cheese		
hytteost	cottage cheese		
fløde	cream		
smør	butter		
margarine	margarin		
æg	egg		
gær	yeast (usually sold fresh, in the refrigerator section)		
salt	salt		
sukker	sugar		
brun farin	brown sugar		
flormelis	powdered sugar		

DTU Lyngby Campus
- One of DTU's many
research projects



Links and Further Reading

DTU

[Technical University of Denmark \(DTU\)](#)
[Maps and How to Get to DTU](#)

Denmark

[Life in Denmark](#)
[About Denmark](#)
[Facts and Figures about Denmark](#)
[Ministry of Foreign Affairs of Denmark](#)
[The Danish Parliament \(Folketinget\)](#)
[The Danish Monarchy](#)
[VisitDenmark](#)
[National Bank of Denmark](#)
[The Royal Library](#)
[The Local - Denmark's News in English](#)

Lyngby

[Welcome to Lyngby Municipality](#)

Roskilde

[Welcome to Roskilde Municipality](#)

Copenhagen

[Visit Copenhagen](#)
[Welcome to Copenhagen Municipality](#)
[Welcome to Frederiksberg Municipality](#)
[Copenhagen Capacity](#)
[Copenhagen Post](#) - English newspaper
[Cinemateket](#) - The Danish Film Institute's filmhouse, which shows a selection of international, Danish and English-language films

Transportation

[Rejseplanen](#) - Online trip planner for all public transport
[DSB](#) - the Danish railway system
[Copenhagen Airport](#)
[The Copenhagen Metro](#)



Corporate HR
Technical University of Denmark

Anker Engelunds Vej 1
Building 101A, 1st floor
2800 Kongens Lyngby
Tlf. +45 45 25 25 25
www.dtu.dk

Aerial view of
DTU Risø Campus

